

How to Publish your chart

How to Publish your VisiRule Chart (Feb 2020)

The VisiRule Uploader/Publisher is an additional software component which can be used from within the VisiRule Author package on the Windows desktop.

This software has probably been sent to you via email or DropBox, separately from your VisiRule software, AND you will need to load it into VisiRule from within VisiRule.

The Uploader/Publisher software forms part of the VR Extensions for your version of Prolog/Flex/VisiRule.

The software may be shipped to you as a ZIP. In which case, you need to unzip the files first.

The names for the software files you need are vrtext.pc and vrweb.pc.

These are compiled Prolog files and can only be used from within VisiRule.

Once you have located the PC files, copy them into your Prolog home directory (this is where your copy of PRO386w.exe has been installed). You need to know where that is!

In any case you need the following 2 files into your Prolog home directory

A] vrtext.pc

B] vrweb.pc

C] To run the software later, you will need to provide an account and a password to upload to the VisiRule server

If you do not have your own user space, there is a test space you can use:

Host=visiruleexamples.com

user=guest1

password=ei5LQZK&u#

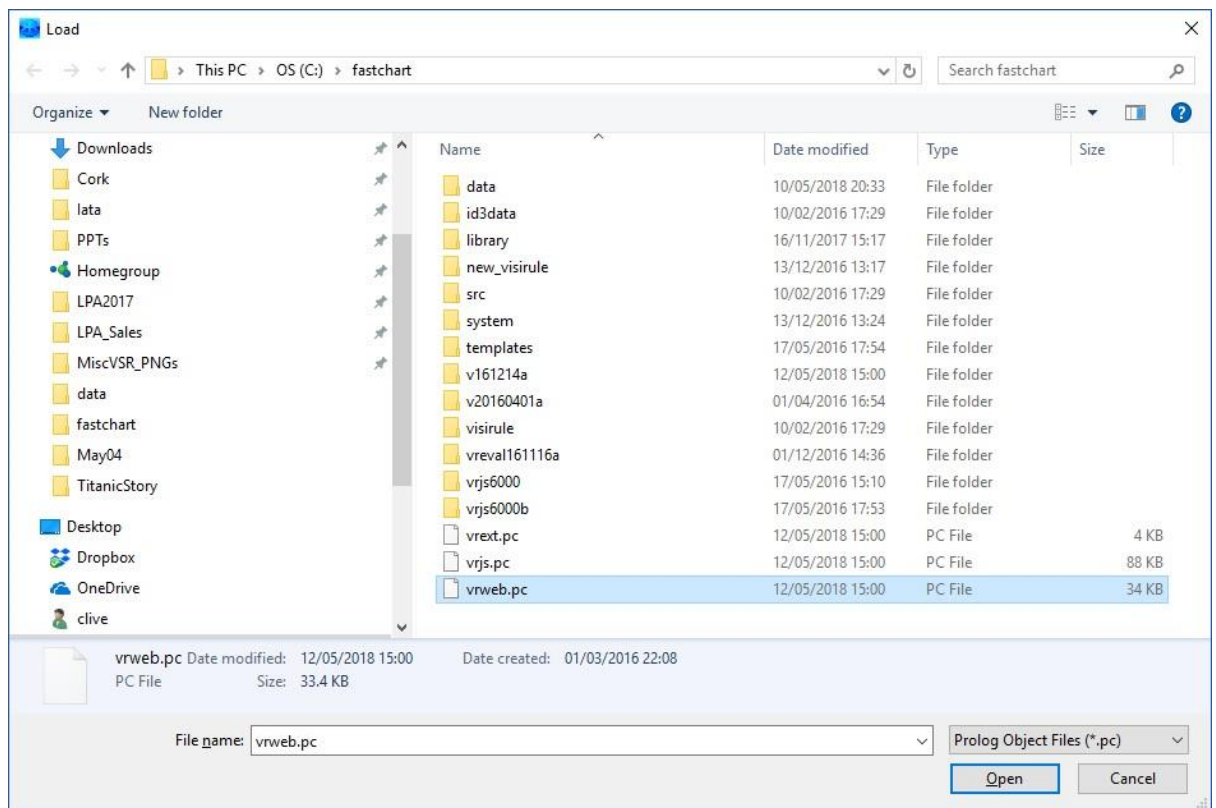
How to Publish your chart

- 1] Start VisiRule --- either by clicking a shortcut, or by loading WinProlog and then manually loading VisiRule from the system directory.
- 2] Load the Uploader/Publisher code

There are several ways to do this ... the one described here is:

- a) Go to File/Load
- b) Change File extension in bottom right hand corner to Prolog Object Code (.PC)
- c) Select the file vrweb.pc

This will load in the vrex.t.pc file when it is needed.



Or you can type:

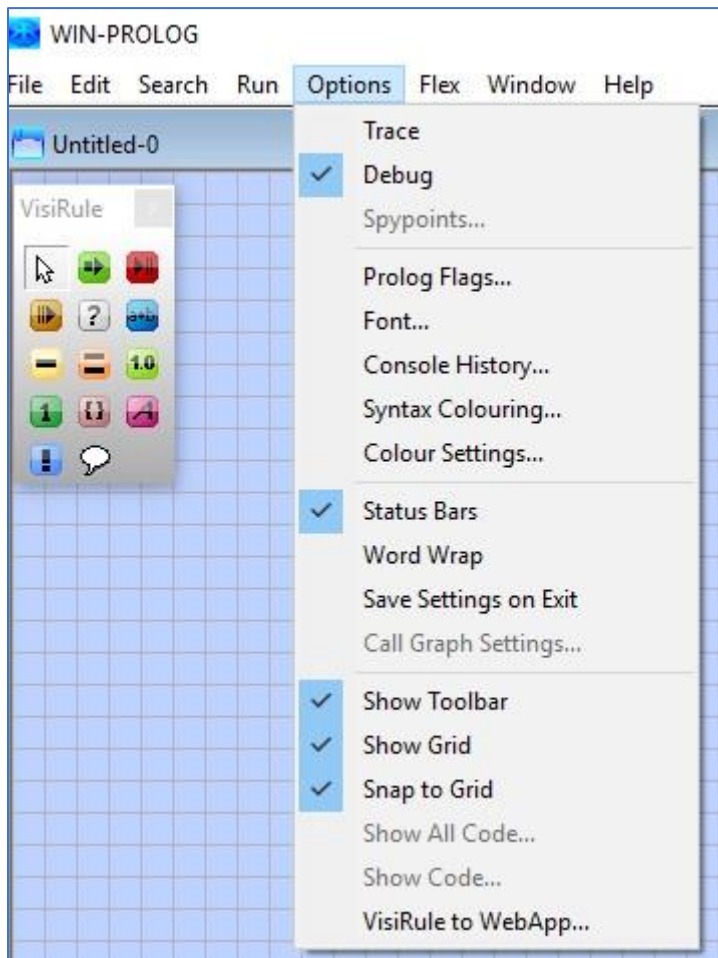
?- load_files(vrweb).

Or:

?- ensure_loaded(prolog(vrweb)).

How to Publish your chart

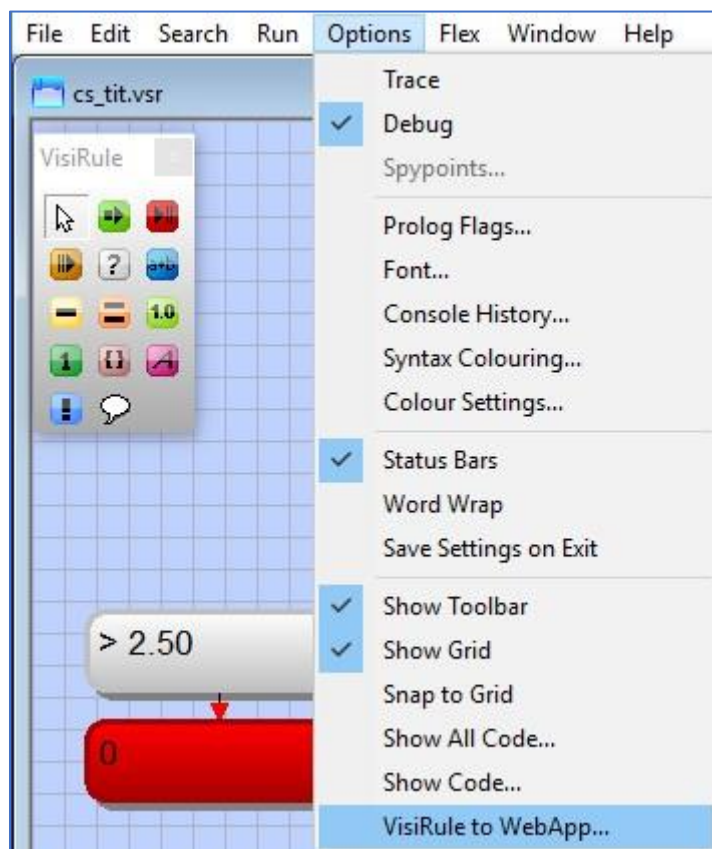
Once the file has been loaded, it should install a new menu item at the bottom of the Options menu entitled VisiRule to WebApp...



If this doesn't appear, check for possible error messages in the Console Window and contact LPA

How to Publish your chart

4] Choose the VisiRule to WebApp ... menu item from the Options menu:

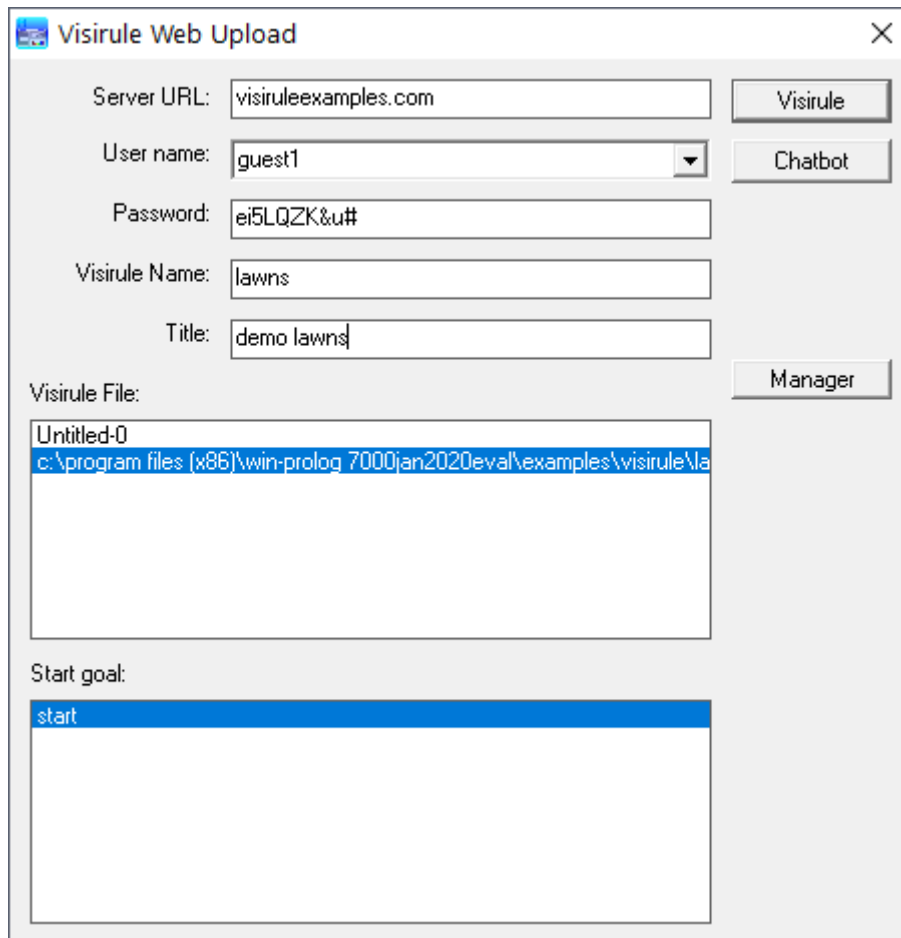


5] Select the chart you want to publish from the VisiRule File list of open charts.

This will then populate the Start goal menu and you must select the initial Start goal.

You can also supply a Title for the Web Page

How to Publish your chart



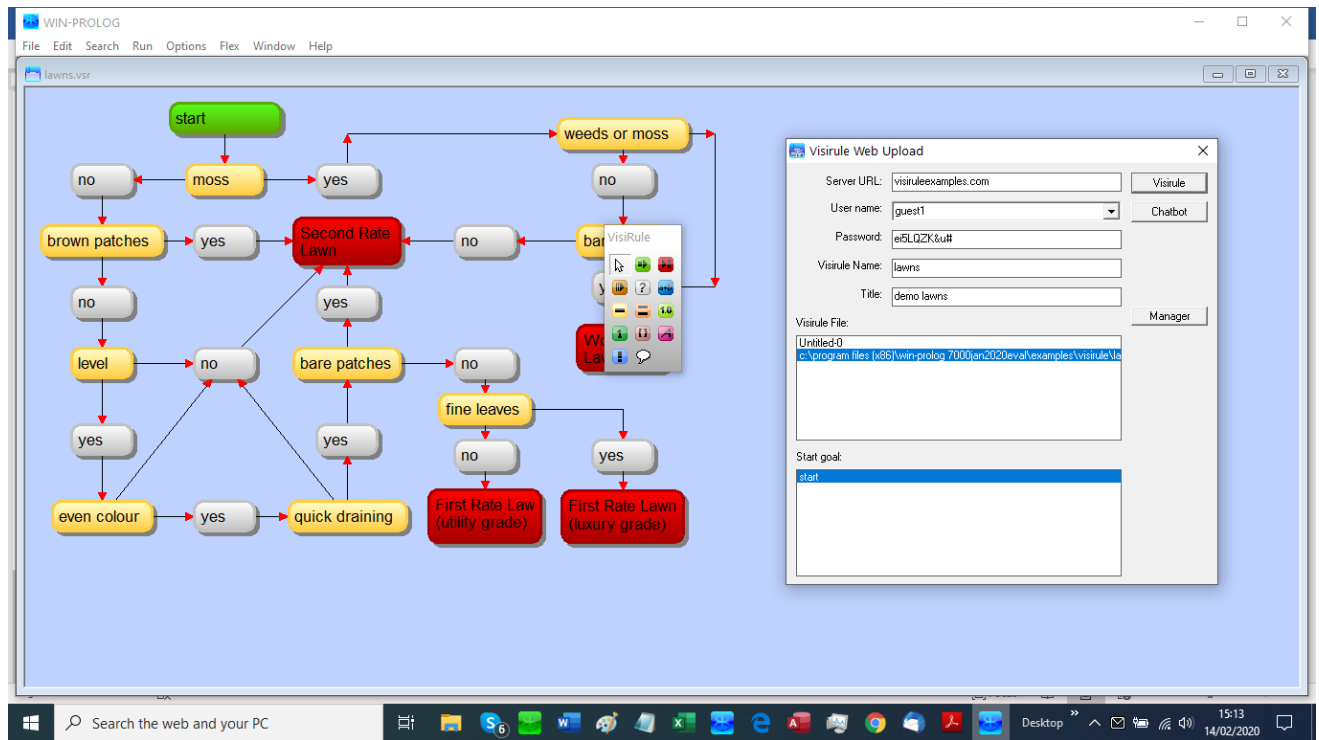
The image shows a Windows-style dialog box titled "Visirule Web Upload" with a close button (X) in the top right corner. The dialog contains several input fields and buttons:

- Server URL:** A text box containing "visiruleexamples.com".
- User name:** A dropdown menu showing "guest1".
- Password:** A text box containing "ei5LQZK&u#".
- Visirule Name:** A text box containing "lawns".
- Title:** A text box containing "demo lawns".
- Visirule File:** A list box with two items: "Untitled-0" and a long file path starting with "c:\program files (x86)\win-prolog 7000jan2020eval\examples\visiruleMa". The second item is selected and highlighted in blue.
- Start goal:** A list box with one item: "start", which is selected and highlighted in blue.

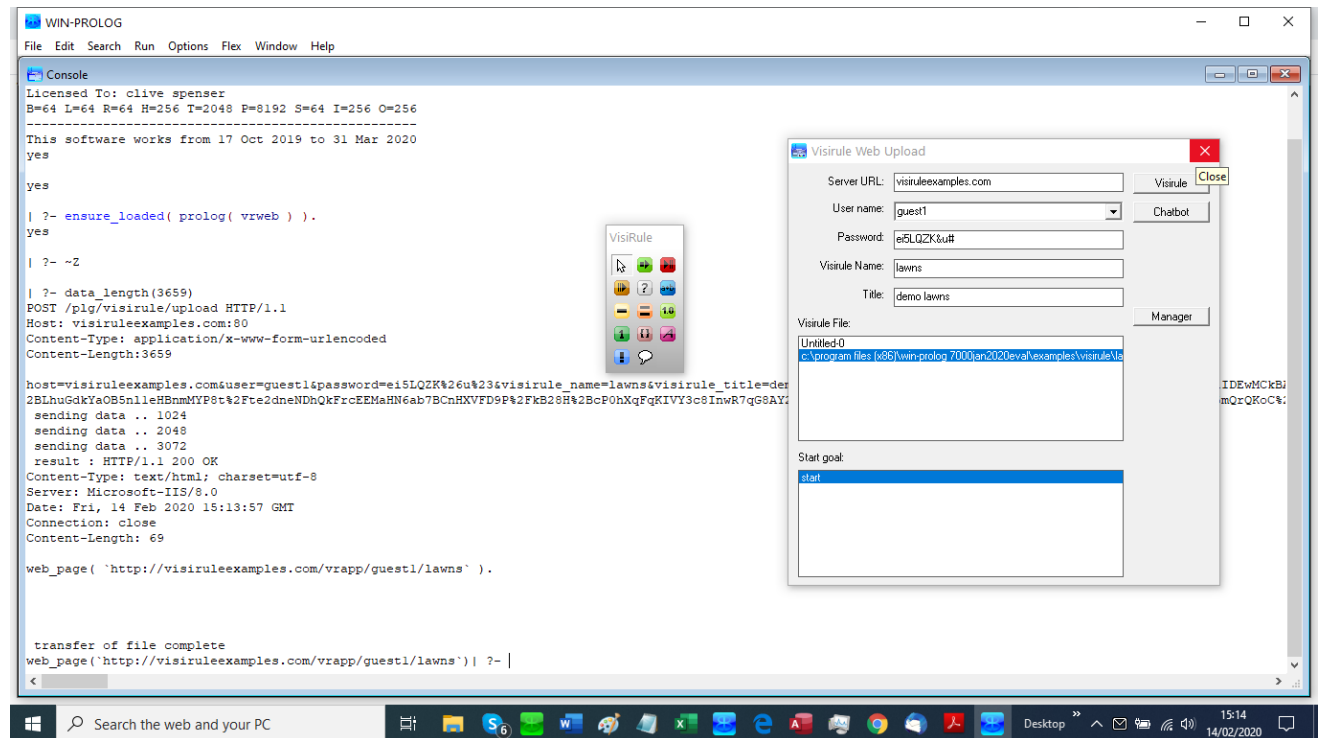
On the right side of the dialog, there are three buttons: "Visirule" (top), "Chatbot" (middle), and "Manager" (bottom).

Figure 3 – VisiRule Web Upload dialog

How to Publish your chart



Click VisiRule and you should see in the Console Window something like:



How to Publish your chart

Does the lawn have moss or weeds?

no

yes

Next

Application State

Questions

Name	Value	Prompt	Explanation
------	-------	--------	-------------

Global Data

Name	Value
------	-------

Display Chart

```
graph TD; start([start]) --> moss[moss]; moss --> no1[no]; moss --> yes1[yes]; weeds[weeds or moss] --> no2[no];
```

Note the URL at the top of the Window – you can send this to your friends and colleagues.

It will look something like:

<https://visiruleexamples.com/vrapp/guest1/lawns>

If it doesn't work, you probably have an error somewhere – you may then to run the verifier.